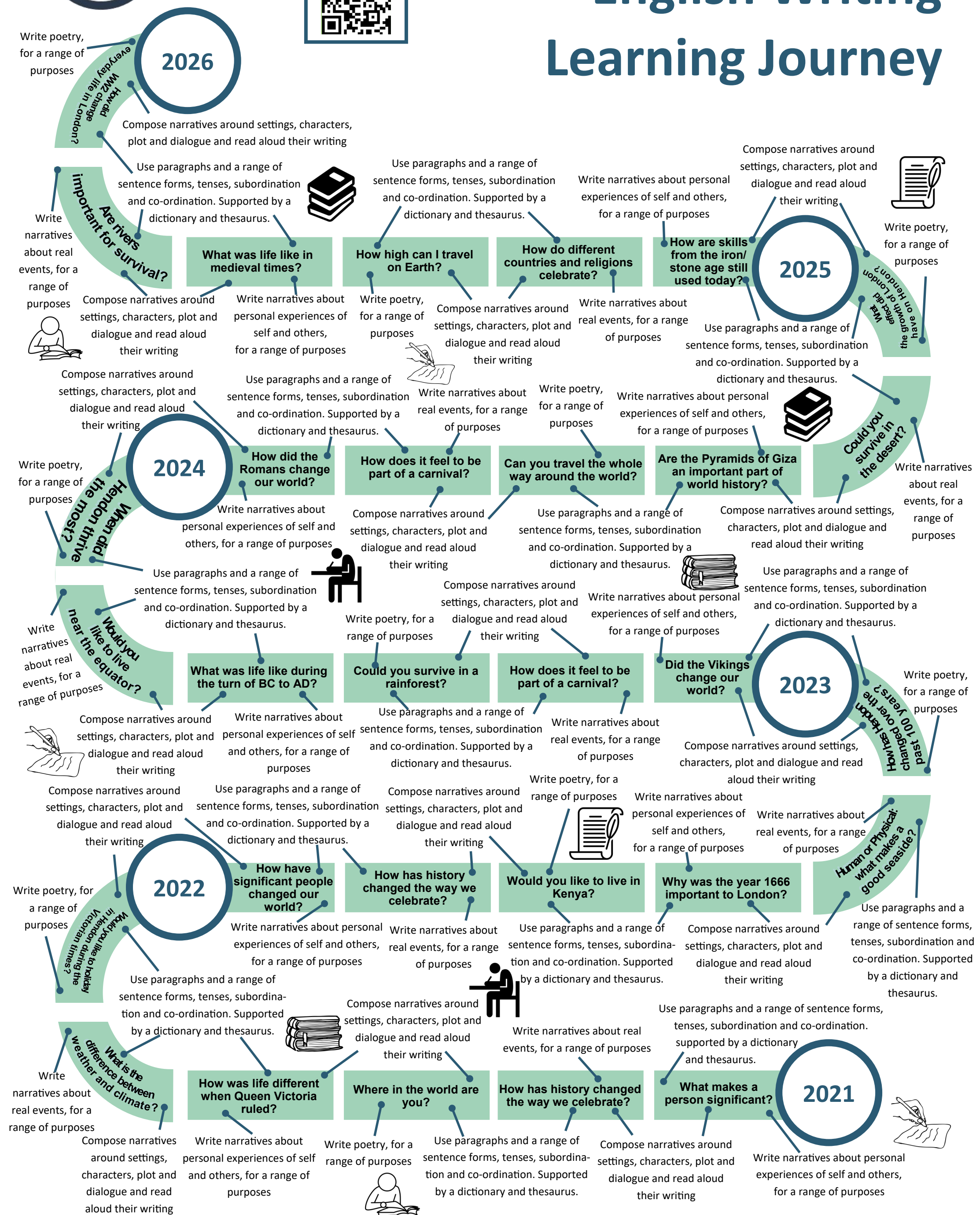




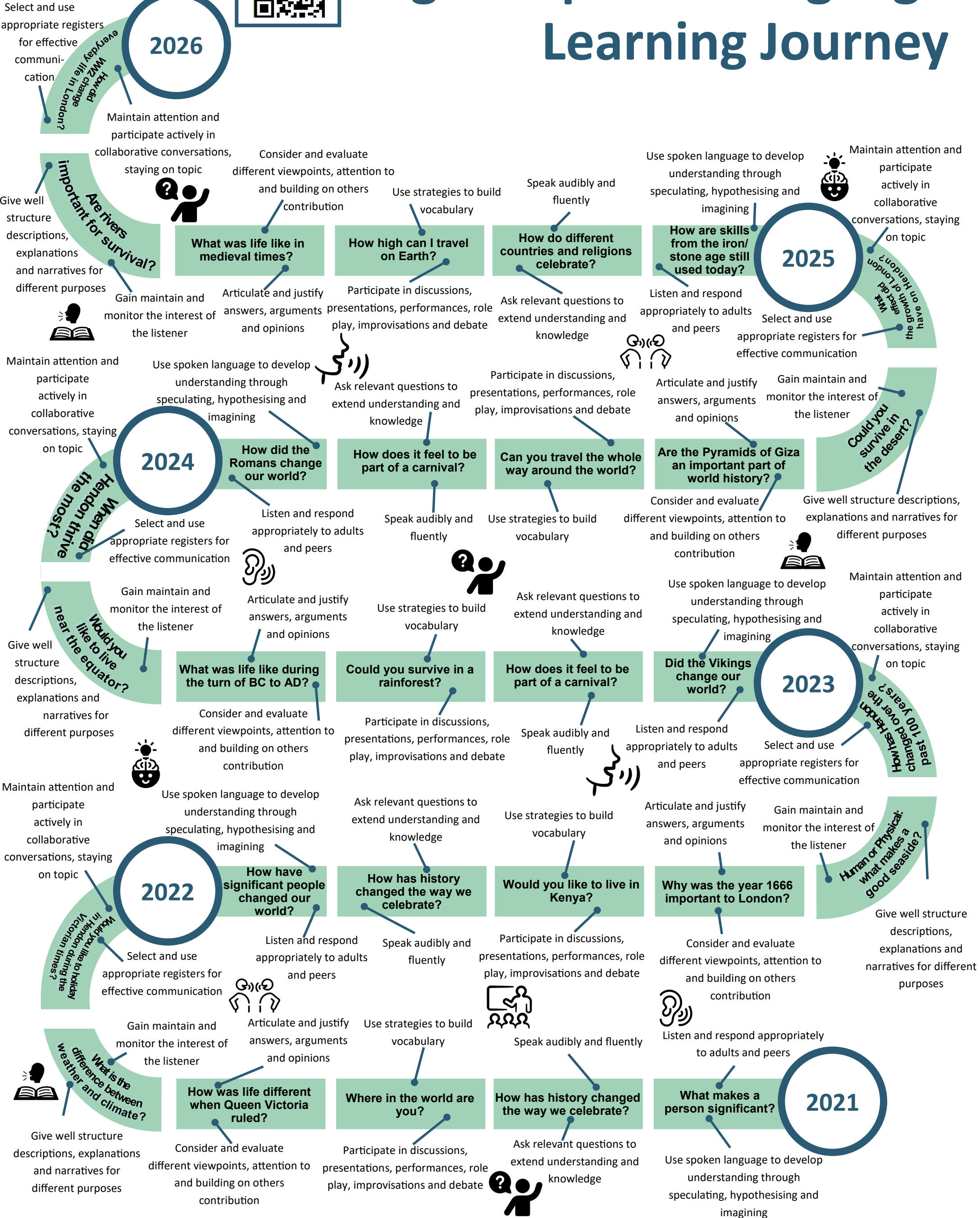
KS1/2 English Writing Learning Journey





KS1/2

English Spoken Language Learning Journey





KS3/4 English Reading Learning Journey

20

Read seminal world literature

How did WW2 change everyday life in London?

Understanding increasingly challenging texts - vocabulary, inferences, purpose and audience

Are rivers important for survival?

Read a play by Shakespeare

Understanding increasingly challenging texts - vocabulary, inferences, purpose and audience

What was life like in medieval times?

Read pre-1914 literature including prose, poetry

Understanding increasingly challenging texts - vocabulary, inferences, purpose and audience

How high can I travel on Earth?

Read critically, making critical comparisons - knowing language, poetic conventions, setting, plot and characterisation

Read seminal world literature

How do different countries and religions celebrate?

Read a play by Shakespeare

Understanding increasingly challenging texts - vocabulary, inferences, purpose and audience

How are skills from the iron/stone age still used today?

Read contemporary literature including prose, poetry and drama

Understanding increasingly challenging texts - vocabulary, inferences, purpose and audience

Read poetry from 1789, including representative Romantic poetry

What effect did the growth of London have on Hendon?

Read critically, making critical comparisons - knowing language, poetic conventions, setting, plot and characterisation

2024

When did Hendon thrive the most?

Read seminal world literature

Understanding increasingly challenging texts - vocabulary, inferences, purpose and audience

How did the Romans change our world?

Read a range of non-fiction, including essays, reviews and journalism

Read critically, making critical comparisons - knowing language, poetic conventions, setting, plot and characterisation

How does it feel to be part of a carnival?

Read pre-1914 literature including prose, poetry

Understanding increasingly challenging texts - vocabulary, inferences, purpose and audience

Can you travel the whole way around the world?

Read a work from the 19th century

Understanding increasingly challenging texts - vocabulary, inferences, purpose and audience

Are the Pyramids of Giza an important part of world history?

Read a work from the 20th century

Understanding increasingly challenging texts - vocabulary, inferences, purpose and audience

Could you survive in the desert?

Read a work from the 21st century

Understanding increasingly challenging texts - vocabulary, inferences, purpose and audience

2022

Would you like to live near the equator?

Read a play by Shakespeare

Understanding increasingly challenging texts - vocabulary, inferences, purpose and audience

What was life like during the turn of BC to AD?

Read pre-1914 literature including prose, poetry

Understanding increasingly challenging texts - vocabulary, inferences, purpose and audience

Could you survive in a rainforest?

Read seminal world literature

Understanding increasingly challenging texts - vocabulary, inferences, purpose and audience

How does it feel to be part of a carnival?

Read contemporary literature including prose, poetry and drama

Understanding increasingly challenging texts - vocabulary, inferences, purpose and audience

Did the Vikings change our world?

Read a play by Shakespeare

Understanding increasingly challenging texts - vocabulary, inferences, purpose and audience

How has Haddon changed over the past 100 years?

Read poetry from 1789, including representative Romantic poetry

Read critically, making critical comparisons - knowing language, poetic conventions, setting, plot and characterisation

How have significant people changed our world?

Read a range of non-fiction, including essays, reviews and journalism

Read critically, making critical comparisons - knowing language, poetic conventions, setting, plot and characterisation

How has history changed the way we celebrate?

Read pre-1914 literature including prose, poetry and drama

Understanding increasingly challenging texts - vocabulary, inferences, purpose and audience

Would you like to live in Kenya?

Read a work from the 19th century

Understanding increasingly challenging texts - vocabulary, inferences, purpose and audience

Why was the year 1666 important to London?

Read a work from the 20th century

Understanding increasingly challenging texts - vocabulary, inferences, purpose and audience

Human or Physical: what makes a good seaside?

Read a work from the 21st century

Understanding increasingly challenging texts - vocabulary, inferences, purpose and audience

What is the difference between weather and climate?

Read a play by Shakespeare

Understanding increasingly challenging texts - vocabulary, inferences, purpose and audience

How was life different when Queen Victoria?

Read pre-1914 literature including prose, poetry and drama

Understanding increasingly challenging texts - vocabulary, inferences, purpose and audience

Where in the world are you?

Read critically, making critical comparisons - knowing language, poetic conventions, setting, plot and characterisation

Read seminal world literature

How has history changed the way we celebrate?

Read a play by Shakespeare

Understanding increasingly challenging texts - vocabulary, inferences, purpose and audience

What makes a person significant?

Read contemporary literature including prose, poetry and drama

Understanding increasingly challenging texts - vocabulary, inferences, purpose and audience

KS3/4

English Reading Learning Journey

2025

Understanding increasingly challenging texts - vocabulary, inferences, purpose and audience

Read a play by Shakespeare

Read critically, making critical comparisons - knowing language, poetic conventions, setting, plot and characterisation

Could you survive in the desert?

Read a work from the 21st century

Understanding increasingly challenging texts - vocabulary, inferences, purpose and audience

Are the Pyramids of Giza an important part of world history?

Read a work from the 20th century

Understanding increasingly challenging texts - vocabulary, inferences, purpose and audience

Can you travel the whole way around the world?

Read a work from the 19th century

Understanding increasingly challenging texts - vocabulary, inferences, purpose and audience

How does it feel to be part of a carnival?

Read pre-1914 literature including prose, poetry

Understanding increasingly challenging texts - vocabulary, inferences, purpose and audience

Could you survive in a rainforest?

Read seminal world literature

Understanding increasingly challenging texts - vocabulary, inferences, purpose and audience

How does it feel to be part of a carnival?

Read contemporary literature including prose, poetry and drama

Understanding increasingly challenging texts - vocabulary, inferences, purpose and audience

Did the Vikings change our world?

Read a play by Shakespeare

Understanding increasingly challenging texts - vocabulary, inferences, purpose and audience

How has Haddon changed over the past 100 years?

Read poetry from 1789, including representative Romantic poetry

Read critically, making critical comparisons - knowing language, poetic conventions, setting, plot and characterisation

Why was the year 1666 important to London?

Read a work from the 20th century

Understanding increasingly challenging texts - vocabulary, inferences, purpose and audience

Human or Physical: what makes a good seaside?

Read a work from the 21st century

Understanding increasingly challenging texts - vocabulary, inferences, purpose and audience

What makes a person significant?

Read contemporary literature including prose, poetry and drama

Understanding increasingly challenging texts - vocabulary, inferences, purpose and audience

How has history changed the way we celebrate?

Read a play by Shakespeare

Understanding increasingly challenging texts - vocabulary, inferences, purpose and audience

Where in the world are you?

Read critically, making critical comparisons - knowing language, poetic conventions, setting, plot and characterisation

Read seminal world literature

2021





KS3/4 English Writing Learning Journey

20

Write imaginative stories

How did WW2 change everyday life in London?

Plan, draft, edit and proof-read considering audience, vocabulary, grammar and structure

Are rivers important for survival?

Draw on factual knowledge and a range of literary and

Write scripts

Plan, draft, edit and proof-read considering audience, vocabulary, grammar and structure

2024

When did the Romans thrive the most?

Draw on factual knowledge and a range of literary and

Write imaginative stories

Plan, draft, edit and proof-read considering audience, vocabulary, grammar and structure

Would you like to live near the equator?

Draw on factual knowledge and a range of literary and

Write scripts

Plan, draft, edit and proof-read considering audience, vocabulary, grammar and structure

2022

Would you like to holiday in London during the Victorian times?

Write imaginative stories

Plan, draft, edit and proof-read considering audience, vocabulary, grammar and structure

What is the difference between weather and climate?

Write scripts

Plan, draft, edit and proof-read considering audience, vocabulary, grammar and structure

How was life different when Queen Victoria

Write poetry

Draw on factual knowledge and a range of literary and

What was life like in medieval times?

Write poetry

Draw on factual knowledge and a range of literary and

How high can I travel on Earth?

Plan, draft, edit and proof-read considering audience, vocabulary, grammar and structure

Write well-structured formal expository and narrative essays

How does it feel to be part of a carnival?

Write scripts

Plan, draft, edit and proof-read considering audience, vocabulary, grammar and structure

Could you survive in a rainforest?

Write well-structured formal expository and

Plan, draft, edit and proof-read considering audience, vocabulary, grammar and structure

Where in the world are you?

Write well-structured formal expository and narrative essays

Draw on factual knowledge and a range of literary and

How has history changed the way we celebrate?

Write scripts

Plan, draft, edit and proof-read considering audience, vocabulary, grammar and structure

How do different countries and religions celebrate?

Write scripts

Plan, draft, edit and proof-read considering audience, vocabulary, grammar and structure

Can you travel the whole way around the world?

Draw on factual knowledge and a range of literary and

Write scripts

How does it feel to be part of a carnival?

Write scripts

Draw on factual knowledge and a range of literary and

Would you like to live in Kenya?

Write imaginative stories

Plan, draft, edit and proof-read considering audience, vocabulary, grammar and structure

How has history changed the way we celebrate?

Write scripts

Plan, draft, edit and proof-read considering audience, vocabulary, grammar and structure

What makes a person significant?

Write imaginative stories

Plan, draft, edit and proof-read considering audience, vocabulary, grammar and structure

How are skills from the iron/stone age still used today?

Draw on factual knowledge and a range of literary and

Write scripts

Are the Pyramids of Giza an important part of world history?

Draw on factual knowledge and a range of literary and

Write scripts

Did the Vikings change our world?

Write imaginative stories

Plan, draft, edit and proof-read considering audience, vocabulary, grammar and structure

Why was the year 1666 important to London?

Write scripts

Draw on factual knowledge and a range of literary and

Human or Physical: what makes a good seaside?

Write imaginative stories

Draw on factual knowledge and a range of literary and

How has history changed the way we celebrate?

Write scripts

Plan, draft, edit and proof-read considering audience, vocabulary, grammar and structure

2025



Plan, draft, edit and proof-read considering audience, vocabulary, grammar and structure

Write poetry

What effect did the growth of London have on Hendon?

Could you survive in the desert?

Write imaginative

Plan, draft, edit and proof-read considering audience, vocabulary, grammar and structure

2023

How has Hendon changed over the past 100 years?

Write poetry

Draw on factual knowledge and a range of literary and

Human or Physical: what makes a good seaside?

Write imaginative stories

Draw on factual knowledge and a range of literary and

2021

What makes a person significant?

Write imaginative stories

Plan, draft, edit and proof-read considering audience, vocabulary, grammar and structure

How has history changed the way we celebrate?

Write scripts

Plan, draft, edit and proof-read considering audience, vocabulary, grammar and structure



KS3/4 English Speaking & Listening Learning Journey

20

Improvise, rehearse and perform play scripts and poetry

How did WW2 change everyday life in London?

Give short speeches and presentations, expressing own succinct ideas

Engage in informal and formal discussions and debates, summarising and building on what has been said

Are rivers important for survival?

Give short speeches and presentations, expressing

What was life like in medieval times?

Improvise, rehearse and perform play scripts and poetry

Engage in informal and formal discussions and debates, summarising and building on what has been said

When did the Hendon thrive the most?

Improvise, rehearse and perform play scripts and poetry

Engage in informal and formal discussions and debates, summarising and building on what has been said

Would you like to live near the equator?

Give short speeches and presentations, expressing

What was life like during the turn of BC to AD?

Improvise, rehearse and perform play scripts and poetry

Engage in informal and formal discussions and debates, summarising and building on what has been said

How have significant people changed our world?

Improvise, rehearse and perform play scripts and poetry

Engage in informal and formal discussions and debates, summarising and building on what has been said

What is the difference between weather and climate?

Give short speeches and presentations, expressing

How was life different when Queen Victoria was in power?

Improvise, rehearse and perform play scripts and poetry

Engage in informal and formal discussions and debates, summarising and building on what has been said



How high can I travel on Earth?

Improvise, rehearse and perform play scripts and poetry

Engage in informal and formal discussions and debates, summarising and building on what has been said

How does it feel to be part of a carnival?

Improvise, rehearse and perform play scripts and poetry

Engage in informal and formal discussions and debates, summarising and building on what has been said

Could you survive in a rainforest?

Improvise, rehearse and perform play scripts and poetry

Engage in informal and formal discussions and debates, summarising and building on what has been said

How has history changed the way we celebrate?

Improvise, rehearse and perform play scripts and poetry

Engage in informal and formal discussions and debates, summarising and building on what has been said

Where in the world are you?

Improvise, rehearse and perform play scripts and poetry

Engage in informal and formal discussions and debates, summarising and building on what has been said

How do different countries and religions celebrate?

Improvise, rehearse and perform play scripts and poetry

Engage in informal and formal discussions and debates, summarising and building on what has been said

Can you travel the whole way around the world?

Improvise, rehearse and perform play scripts and poetry

Engage in informal and formal discussions and debates, summarising and building on what has been said

How does it feel to be part of a carnival?

Improvise, rehearse and perform play scripts and poetry

Engage in informal and formal discussions and debates, summarising and building on what has been said

Would you like to live in Kenya?

Improvise, rehearse and perform play scripts and poetry

Engage in informal and formal discussions and debates, summarising and building on what has been said

How has history changed the way we celebrate?

Improvise, rehearse and perform play scripts and poetry

Engage in informal and formal discussions and debates, summarising and building on what has been said

How are skills from the iron/stone age still used today?

Improvise, rehearse and perform play scripts and poetry

Engage in informal and formal discussions and debates, summarising and building on what has been said

Are the Pyramids of Giza an important part of world history?

Improvise, rehearse and perform play scripts and poetry

Engage in informal and formal discussions and debates, summarising and building on what has been said

Did the Vikings change our world?

Improvise, rehearse and perform play scripts and poetry

Engage in informal and formal discussions and debates, summarising and building on what has been said

Why was the year 1666 important to London?

Improvise, rehearse and perform play scripts and poetry

Engage in informal and formal discussions and debates, summarising and building on what has been said

What makes a person significant?

Improvise, rehearse and perform play scripts and poetry

Engage in informal and formal discussions and debates, summarising and building on what has been said

2025

Improvise, rehearse and perform play scripts and poetry

Engage in informal and formal discussions and debates, summarising and building on what has been said

What effect did the growth of London have on Hendon?

Could you survive in the desert?

Give short speeches and presentations, expressing

Are the Pyramids of Giza an important part of world history?

Improvise, rehearse and perform play scripts and poetry

Engage in informal and formal discussions and debates, summarising and building on what has been said

How has Hendon changed over the past 100 years?

Improvise, rehearse and perform play scripts and poetry

Engage in informal and formal discussions and debates, summarising and building on what has been said

Human or Physical: what makes a good seaside?

2021

Give short speeches and presentations, expressing

What makes a person significant?

Improvise, rehearse and perform play scripts and poetry

Engage in informal and formal discussions and debates, summarising and building on what has been said